



PRE-CONVENTION EDITION!



National Association of Letter Carriers

William H. Young, President

July 11, 2008 No. 08-12

NALC Bulletin

100 Indiana Ave. NW Washington, DC 20001-2144 202.393.4695 www.nalc.org

66th Biennial Convention Set to Convene in Boston Hillary Clinton on First-Day Agenda



The Boston Convention and Exhibition Center, where the 66th biennial NALC Convention will be held, is pictured at the left. Shown at the right are some of the convention speakers: top row (l-r) USPS Board of Governors Chairman Alan Kessler and Sen. Hillary Rodham Clinton (D-NY), and bottom row, Rep. John McHugh (R-NY) and APWU President William Burrus.

More than 8,800 elected delegates and their families will assemble in Boston, Massachusetts for the 66th NALC Biennial Convention July 21-25 as members gear up for this fall's presidential and congressional elections and the union continues its fight against 'contracting out' letter carrier jobs and other back-door efforts to privatize the Postal Service.

The debates, resolutions and other actions by the delegates will set the course for the union's relations with the Postal Service for the next two years.

NALC President William H. Young will preside over the convention and deliver the keynote address at the opening session on Monday, July 21. Secretary-Treasurer Jane E. Broendel will officially convene the convention at 10 a.m. EDT.

Also on the first-day agenda will be an address by Sen. Hillary Rodham Clinton (D-NY), who the NALC endorsed for President of the United States, but who subsequently suspended her campaign and backed Sen. Barack Obama (D-IL) after a hard-fought primary season.

On Tuesday, the delegates will enjoy a unique treat as a bronze sculpture of President Emeritus Vince Sombrotto is unveiled during a special ceremony. Sombrotto and members of his family will be on hand for the occasion. Delegates at the 65th Convention in 2006 voted to name the NALC Headquarters Building in honor of the longtime NALC president.

Tour Tickets!

Tickets will be at the Tour Booth in Exhibit Hall A on Saturday, Sunday or Monday during registration hours. On Tuesday-Thursday, tickets will be in the NALC Headquarters Office. If there are questions after Monday, call Lindsay at Conventures: (617) 439-7700.

Delegates will discuss issues critical to the future of the Postal Service, including the work of the Route Evaluation Task Force, efforts to stop contracting out of letter carrier positions, and resolutions and constitutional amendments submitted by delegates.

They will also nominate and elect seven AFL-CIO delegates to represent the NALC at the next convention of the labor federation. President Young and Secretary-Treasurer Broendel are automatically delegates by virtue of their positions.

Speakers scheduled to address the convention, in addition to Senator Clinton, include: Boston Mayor Thomas Menino; Rep. John McHugh (R-NY), a stalwart of postal reform legislation; Reps. John Tierney and Michael Capuano, both (D-MA); APWU President William Burrus; Alan Kessler, chairman of the USPS Board of Governors; Michael Critelli, executive chairman of the board, Pitney Bowes Inc.; Bill Disbrow, president and CEO, Valpak; Philip Bowyer, deputy general secretary, Union Network International; Stephen Fitzpatrick, general secretary, Communications Workers Union, Ireland; and Dean Baker, co-director, Center for Economic and Policy Research.

Delegates will set the hours for the general sessions when they adopt the Convention Rules. The NALC Executive Council has proposed daily sessions from 10 a.m. to 2 p.m., with several additional hours both before and after the general sessions devoted to workshops.

Workshops!

A schedule of workshops and breakfast/workshops at the Convention was included in the June 27 issue of the NALC Bulletin (08-11) and online at www.nalc.org.

Blood Drive!

A special NALC blood drive will be conducted during the convention under the auspices of the American Red Cross. The drive will be on Wednesday, July 23 from 9 a.m. to 3 p.m. in Grand Ballroom West at the convention center. For an appointment go to: www.bloodpartners.org/nalc.

Statement by NALC President Young On 'Early Out' Situation for Carriers

President Young has issued the following statement regarding a possible "early out" period for letter carriers:

"There are many rumors on the Internet about a pending 'early out' for letter carriers.

"I have been advised that the Postal Service is requesting permission to have a Voluntary Early Retirement Act (VERA) opportunity for letter carriers and expects to have an answer at the end of this month.

"Until the Office of Personnel Management (OPM) has acted upon that request, it is premature to announce any 'early out' options. We will continue to monitor the situation and will alert our members as soon as OPM has acted on the USPS request."

Young Defends Universal Service To Postal Regulatory Commission

NALC President William H. Young on July 10 told members of the Postal Regulatory Commission (PRC) what they already know — that universal, six-day postal service is a bedrock of communication among Americans. He said that should not be changed just because European countries have opted for a deregulated, less-inclusive system.

Young said the European model "is entirely inappropriate for the United States."

"A narrowly defined, inflexible definition of universal service does not make sense in the United States — at least not in the context of the new postal law, the Postal Accountability and Enhancement Act of 2006," Young told the PRC.

The NALC president explained that the new law maintains the USPS as a kind of public utility and modernizes the basic framework of the Postal Reorganization Act of 1970. He noted that it "explicitly retained" the PRA's definition of the Postal Service's core mission from Title 39, which says that the Postal Service "shall provide prompt, reliable and efficient services to patrons in all areas and shall render postal services to all communities."

"This core mission should shape your approach to your study," Young said. "The U.S. has been well-served for decades by a flexible, evolutionary approach to universal service, rooted in the deepest traditions of our democracy and changing with technological and market developments."

He said the Commission should also recognize that the Postal Service plays a critical role in the nation's economic, social and political infrastructure and that the postal monopoly, the mailbox statute and six-day delivery are essential elements of true universal service.

"The postal monopoly keeps the overall cost of mailing letters for all mailers low by maximizing the Postal Service's economies of scale and scope; the mailbox statute prevents identity theft and preserves the trust people have in mail; and six-day delivery ensures every American business and household maximum flexibility for conducting their business through the Postal Service," Young said.

Young urged the Commission to be careful about recommending major changes in either the definition of universal service or the extent of the postal monopoly on the basis of unreliable predictions about the future.

"Yes, the Internet is eliminating a lot of traditional mail," he said, "but it is also creating many new mail-based industries served by companies like eBay and Netflix. And it is impossible to predict now the countless ways we will use the Postal Service in the future."

As a requirement of the Postal Accountability and Enhancement Act of 2006, the PRC is due to make a formal report to Congress by December 19 on universal postal service and USPS' monopoly on mail delivery and access to mailboxes.



President Young testifies July 10 before Postal Regulatory Commission on universal service.

SHUTTLE BUS INFORMATION

Complimentary shuttle service is provided between the Boston Convention and Exhibition Center (BCEC) and the official NALC hotels listed below. Shuttle information signs will be posted in the lobby of each shuttle hotel. Check the sign in your hotel lobby for frequency of service, additional information and changes. To comply with the provision of the Americans with Disabilities Act, a vehicle equipped with a wheelchair lift is available during all convention hours on an on-call basis. Requests for use of this service can be made directly by calling the shuttle bus operations manager.

Hours of Operation

Saturday, July 19 11:30am – 5:30pm	Monday, July 21 — Thursday, July 24 6:30am – 5:30pm
Sunday, July 20 8:30am – 6:00pm	Friday, July 25 6:30am – 3:00pm

Hotels and Routes

Route 1 Boston Park Plaza Doubletree Hotel Boston Downtown Jury's Boston Radisson Boston	Route 4 The Colonnade Hotel Sheraton Boston The Midtown	Route 8 Doubletree Club Boston Bayside
Route 2 Hilton Financial District Hyatt Regency Boston Downtown Omni Parker House	Route 5 Embassy Suites Boston at Logan Airport Hilton Airport Hyatt Harborside	Route 9 Hampton Inn & Suites Boston Crosstown Center
Route 3 Fairmont Copley Plaza The Lenox Hotel Westin Copley Square	Route 6 The Liberty	Route 10 Sheraton Newton
	Route 7 Ramada Boston Best Western Adam Inn	

Within Walking Distance

The Seaport Hotel and the Westin Boston Waterfront are within walking distance and will not have regular shuttle bus service. Special service for the disabled will be available at the Seaport Hotel. (See separate item on Accommodations for Disabled Attendees).

Frequency

- Routes 1 through 6 operate continuous service every 10-15 minutes during peak frequency and every 20-25 minutes during non-peak frequency.
- Routes 7 and 8 operate scheduled service every 30 minutes during peak frequency and every 60 minutes during non-peak frequency.
- Routes 9 and 10 operate scheduled service every 60 minutes during both peak and non-peak frequency.

Peak times are immediately before workshops and business sessions and immediately after business sessions and workshops.

Ride the "T" to BCEC

Boston's mass transit system, the "T," offers direct transportation between Logan Airport, Boston Convention & Exhibition Center (BCEC), and downtown Boston. To reach the convention center, take the Silver Line/Waterfront and exit via the World Trade Center station, which is within walking distance of the Seaport Hotel and BCEC. Many official NALC hotels are just steps away from other "T" stations throughout the city. Stations can be identified by outdoor signs with a black T inside a white circle.

Signed Credential Cards Needed at Registration

Delegates and any alternates replacing delegates are reminded that the credential cards previously sent to branch secretaries must be signed by both the branch president and branch secretary and presented at the Convention during registration.

Large branches with 25 convention delegates or more should send one (1) officer to registration, if possible, with the registration cards in alphabetical order.

Registration will be held in Exhibit Hall A on Level 0 at the Boston Convention and Exhibition Center during these hours:

- Saturday, July 19: 12 noon to 5 p.m.
- Sunday, July 20: 9 a.m. to 5 p.m.
- Monday, July 21: 8 a.m. to 12 noon.

After 1 p.m. on Monday, July 21, registration will continue in the NALC Headquarters Office in Room 104 A-B-C on Level One of the Boston Convention and Exhibition Center.

Accommodations for Disabled Attendees

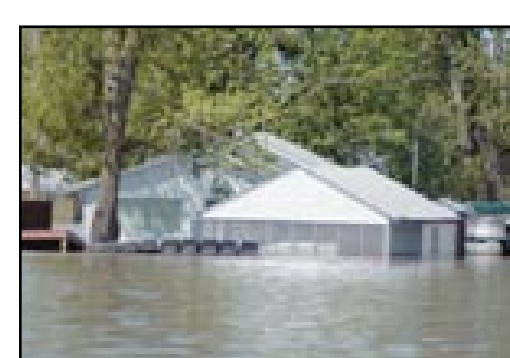
Attendees at the 66th Biennial NALC Convention who may require assistance due to a disability can avail themselves of the following accommodations at the Boston Convention & Exhibition Center (BCEC) in adherence with the Americans with Disabilities Act (ADA):

Wheelchair and scooter rental: For wheelchair and scooter rentals, contact Belmont Medical Supply directly at (617) 484-3888. A limited number of wheelchairs are available free of charge through the First Aid Station. Golf carts are also available at most events for riders to locations inside the building. For assistance at BCEC, contact the First Aid Station at (617) 954-2222.

Oxygen: If you require oxygen refills while in Boston, you can contact Tolman Manufacturing—Supply Co., at (617) 268-1025. You will need the following information: prescription, diagnosis, amount of oxygen and type of equipment required. All major credit cards are accepted. It is suggested that you call a day ahead, though same-day service may be available.

Parking: Accessible parking at the convention center is located in the South Parking Lot, in the rear of the facility. From there, take a handicap-accessible sidewalk to Level Zero, where you enter the BCEC through the Southeast Lobby.

Wheelchair Lift Vehicles: The NALC is providing complimentary shuttle bus service to/from the BCEC. To comply with the ADA provisions, a vehicle equipped with a wheelchair lift will be made available during all convention hours on an on-call basis. Requests for use of this service can be made directly by calling the operations manager on-site. The number will be listed on bus fliers available at the bell desks in all hotels where shuttle service is provided.



The Federal Emergency Management Agency (FEMA) has issued major declarations for victims of Midwest flooding, including this Missouri area. (FEMA photo)

Active and retired postal employees in several states hit by flooding and severe storms in June are eligible for grants from the Postal Employees' Relief Fund to help rebuild and repair their homes and property. The states include Illinois, Indiana, Iowa, Missouri, Minnesota, Montana, Nebraska, West Virginia and Wisconsin.

PERF grants currently range from \$1,000 to \$14,000, depending on the out-of-pocket loss after insurance and payments from the Federal Emergency Management Agency (FEMA) and/or other relief organizations. The Fund assists both active and retired postal employees with the reconstruction of homes and replacement of property damaged by natural disasters and house fires. It does not provide immediate emergency assistance.

Application forms are available on the PERF website: www.postalrelief.com or by writing: Postal Employees' Relief Fund, P.O. Box 34500, Washington, DC 20043-4500, or calling (202) 408-1869.